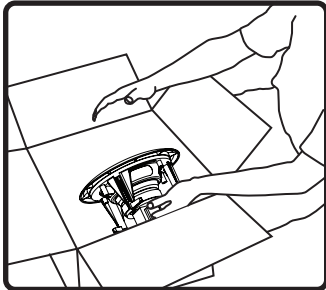




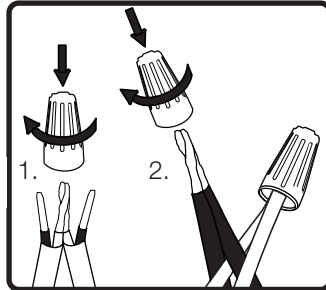
RF52-EZ-WH | Install Instructions For: RF52-EZ speaker

Box contents

- 1 Speaker
- 1 Grille
- 2 Wire nuts

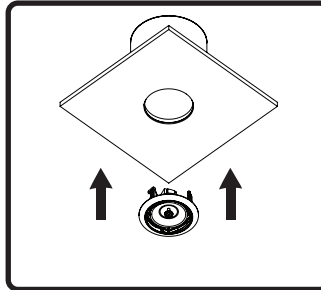


1. Unpack speaker.

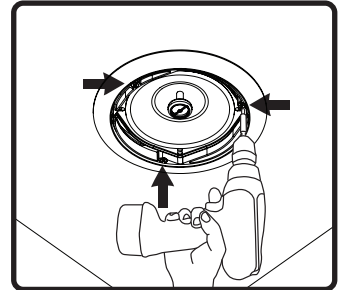


2. Connect speaker wires to signal wires using included wire nuts.

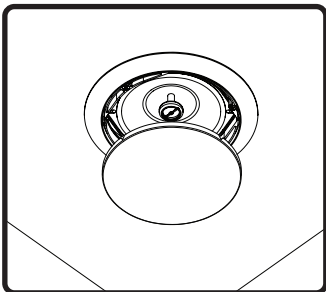
Select the desired wire for the intended tap setting as indicated on the chart below.



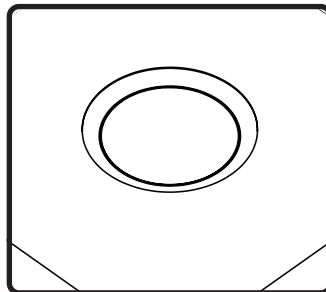
3. Place the speaker in the opening. If installing in an existing backcan, make sure the clamping wings are positioned such that their operation will not be obstructed by any material or objects inside the back can.



4. Tighten each clamping wing screws until they are snug and the speaker fits firmly against the ceiling. **DO NOT OVERTIGHTEN.**



5. Place the grill over the center of the speaker. The magnets will hold it in place.



6. Done.

RF52 Tap Wire Key	Wire Color		
	Black	70V-Common	100V-Common
	Brown	10W	NC
	Orange	5W	10W
	Yellow	2.5W	5W
	Blue	1.3W	2.5W

©2017 SoundTube Entertainment, Inc. All rights reserved. PN INS-RF52-EZ Rev06.25.19

Warning

SoundTube speakers must be installed by a professional audio installer/contractor. For safety and for optimum audio performance, installer must follow all directions issued by SoundTube Entertainment.

Warning

Do not spec or install speaker near support beam, ventilation duct or other structure that may interfere with speaker function or dispersion.